

Attachment F

Building Elevations/ Floor Plans

EXTERIOR ELEVATION SOUTH
SCALE: 3/32" = 1'-0"

04

EXTERIOR ELEVATION NORTH
SCALE: 3/32" = 1'-0"

03

EXTERIOR ELEVATION WEST
SCALE: 3/32" = 1'-0"

02

EXTERIOR ELEVATION EAST
SCALE: 3/32" = 1'-0"

01

SHEET NOTES

1. METAL COPING; COLOR TO MATCH ADJACENT WALL FINISH.
2. EXTERIOR WINDOWS - WITH GRILLES AT GUESTROOMS ONLY UNO
3. EXHAUST FANS OR MECHANICAL UNITS
4. MECHANICAL GRILLES AND/OR LOUVERS TO BE PAINTED TO MATCH ADJACENT EXTERIOR FINISH.
5. OPTIONAL SOLID CANOPY; RECOMMENDED AT SECONDARY BUILDING ENTRANCES.
6. BUILDING SIGN BY OTHERS. PROVIDE BLOCKING & POWER.
7. OPTIONAL ABC BASE AROUND PERIMETER OF BUILDING, RE: 06/A7.10.
8. GROUND-BASED CONDENSER UNITS.
9. OVERFLOW ROOF DRAIN CONDUCTOR HEAD.
10. DRYER EXHAUST VENT LOUVER; COLOR TO MATCH ADJACENT WALL FINISH.
11. ROOF HATCH SAFETY RAILING; FINISH TO MATCH EIFS A3.
12. WALL MOUNTED LIGHT TYPE "EA" (OPTIONAL RECESSED LIGHT, EB, LOCATED IN CANOPY).
13. PROVIDE EXTERIOR BRAND HALLMARK LIGHTS TO UPLIGHT BEVELED ENTRY ARTICULATION. REFER TO PROTOTYPE BOOK AND DESIGN GUIDE.

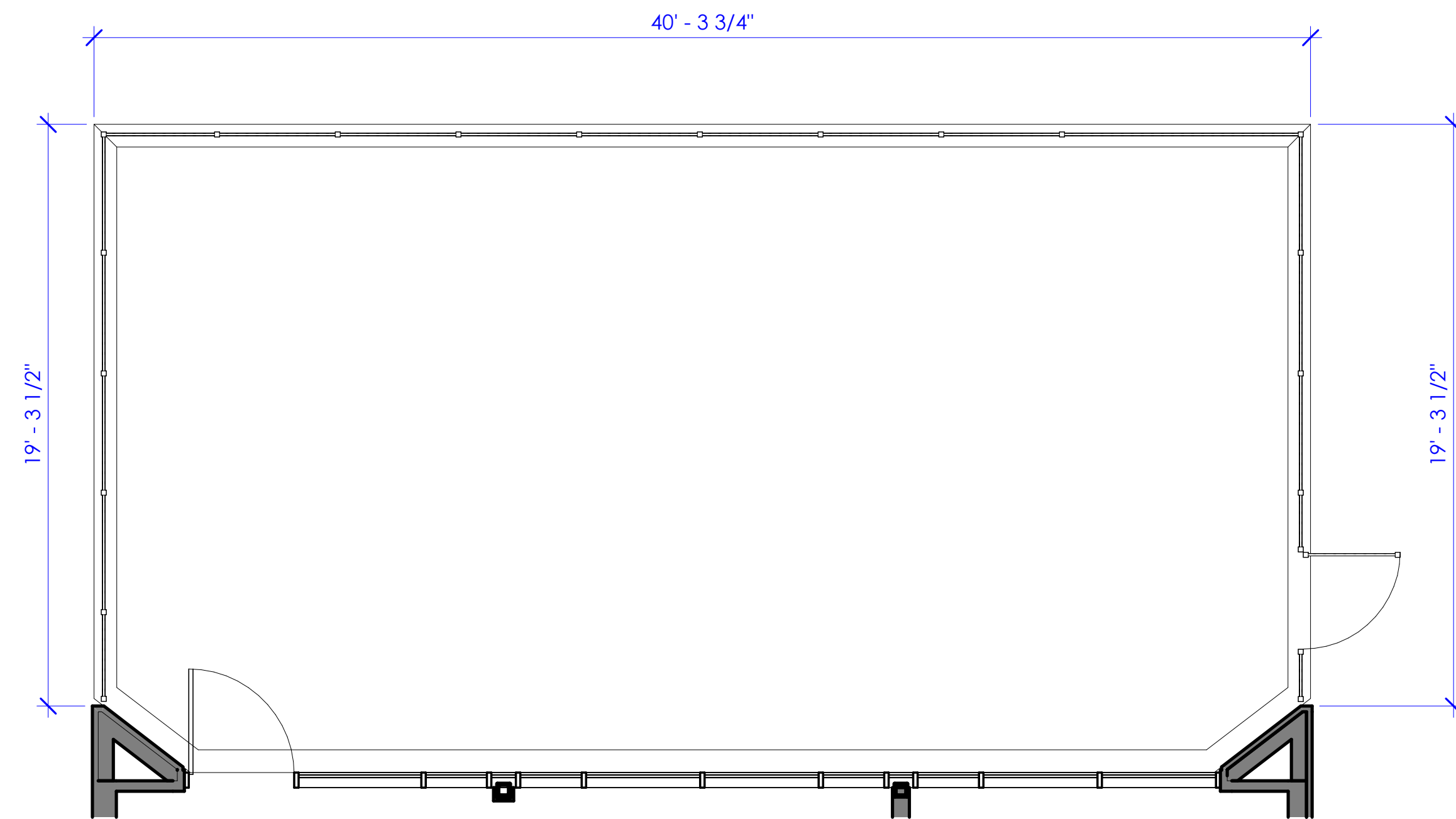
GENERAL NOTES

- A. REFER TO SHEET G0.00 AND IHG SUPPLEMENTAL DOCUMENTS FOR INFORMATION ON EXTERIOR MATERIALS, SYSTEMS, AND COLORS.
- B. REFER TO SHEET A7.20 FOR ENLARGED DETAILS FOR TYPICAL WINDOW UNITS.
- C. TEMPERED GLAZING TO BE PROVIDED AS REQUIRED BY LOCAL CODES.
- D. COORDINATE PLACEMENT OF ALL LOUVERS, VENTS, AND OTHER EXTERIOR ELEMENTS WITH LOCATIONS OF SCORE JOINTS, UNLESS NOTED OTHERWISE.
- E. REFER TO SUPPLEMENTAL BUILDING SIGNAGE PACKAGE FOR ADDITIONAL INFORMATION. COORDINATE ALL SIZING AND LOCATION REQUIREMENTS WITH IHG. SIGNAGE BLOCKING AND POWER SHALL BE COORDINATED WITH SIGNAGE LOCATION.
- F. EXTERIOR BUILDING MOUNTED PRIMARY SIGNAGE SHALL BE CHANNEL LETTER SIGN VISIBLE FROM PRIMARY STREET VIEW.
- G. BUILDING HEIGHT SHOWN HEREIN IS AN APPROXIMATION. STRUCTURAL SYSTEM DESIGN AS SELECTED AND IMPLEMENTED BY THE ARCHITECT AND ENGINEER WILL AFFECT AND MODIFY THE RESULTING OVERALL FLOOR TO FLOOR HEIGHTS.
- H. REFER TO SHEET A9.01 FOR DOOR SCHEDULE. REFER TO SHEET A9.03 FOR WINDOWS AND STOREFRONTS.
- I. REFER TO MECHANICAL AND ELECTRICAL DRAWINGS FOR SYSTEMS AND FIXTURES INFORMATION.
- J. ON METAL COPINGS, EXHAUST VENTS AND OTHER EXTERIOR BUILDING MOUNTED/ INSTALLED ACCESSORIES, FINISHES SHALL MATCH ADJACENT ASSEMBLY FINISH.
- K. REFER TO SHEET A7.10 FOR CANOPY OVER SECONDARY BUILDING ENTRANCES.
- L. REFER TO SHEET A7.20 FOR EIFS REVEAL AND CONTROL JOINT DETAILS.
- M. PROVIDE EXTERIOR LIGHTING TO ILLUMINATE BUILDING EXTERIOR. REFER TO A0.10 AND BRAND PROTOTYPE BOOK AND DESIGN GUIDES.

LEGEND

EXTERIOR MATERIALS	
SYMBOL	DESCRIPTION
	EXTERIOR CLADDING SYSTEM - EIFS A1
	EXTERIOR CLADDING SYSTEM - EIFS A2
	EXTERIOR CLADDING SYSTEM - EIFS A3
	EXTERIOR CLADDING SYSTEM - EIFS A4
	EXTERIOR CLADDING SYSTEM - EIFS A5
	EXTERIOR CLADDING SYSTEM - EIFS B - REVEALS AT 6" OC
	EXTERIOR CLADDING SYSTEM - METAL PANEL C - ENTRY CANOPY
	EXTERIOR CLADDING SYSTEM - METAL PANEL D - WOOD-LIKE METAL PANELS (WALL & SOFFIT)
	MANUFACTURED STONE E
	PAINTED STEEL COLUMN WHITE F

NOTE: SEE G0.00 FOR FULL EXTERIOR MATERIALS LIST.

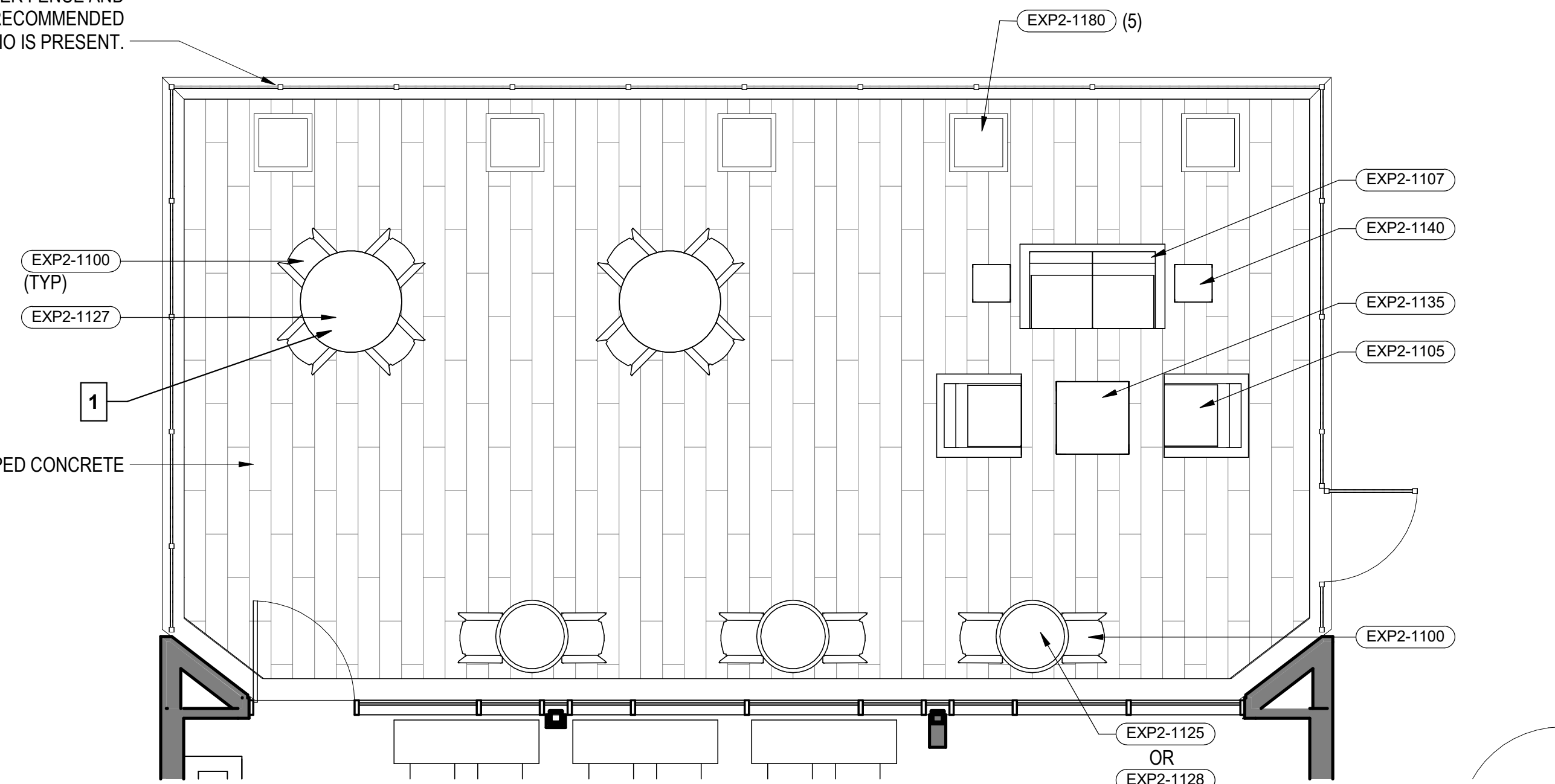


OPTIONAL PATIO ENLARGED PLAN

SCALE: 1/4" = 1'-0"

01

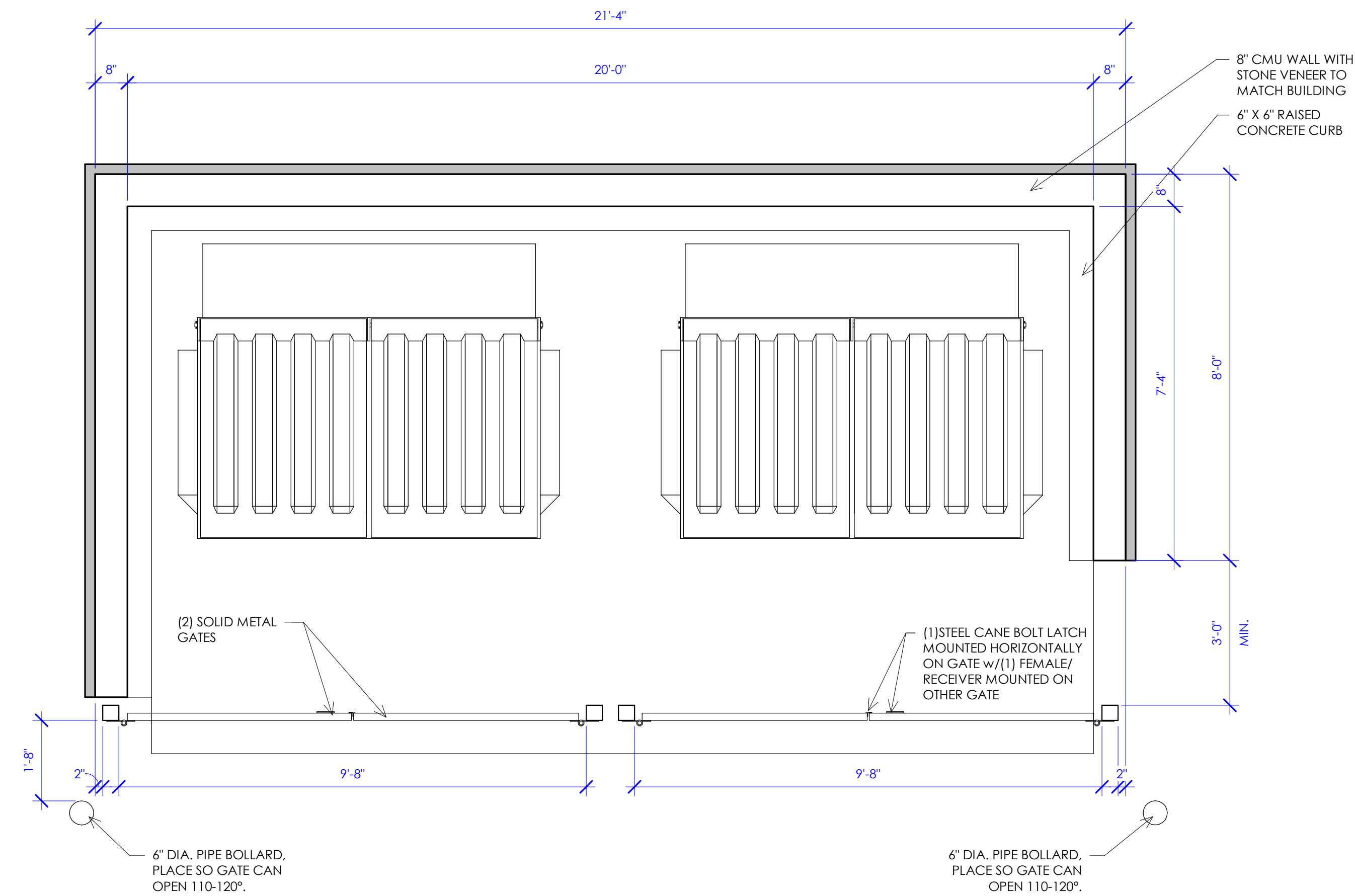
OPTIONAL 48" HIGH PATIO
PERIMETER FENCE AND
GATE; RECOMMENDED
WHERE PATIO IS PRESENT.



OPTIONAL PATIO FINISH & FURNISHINGS PLAN

SCALE: 1/4" = 1'-0"

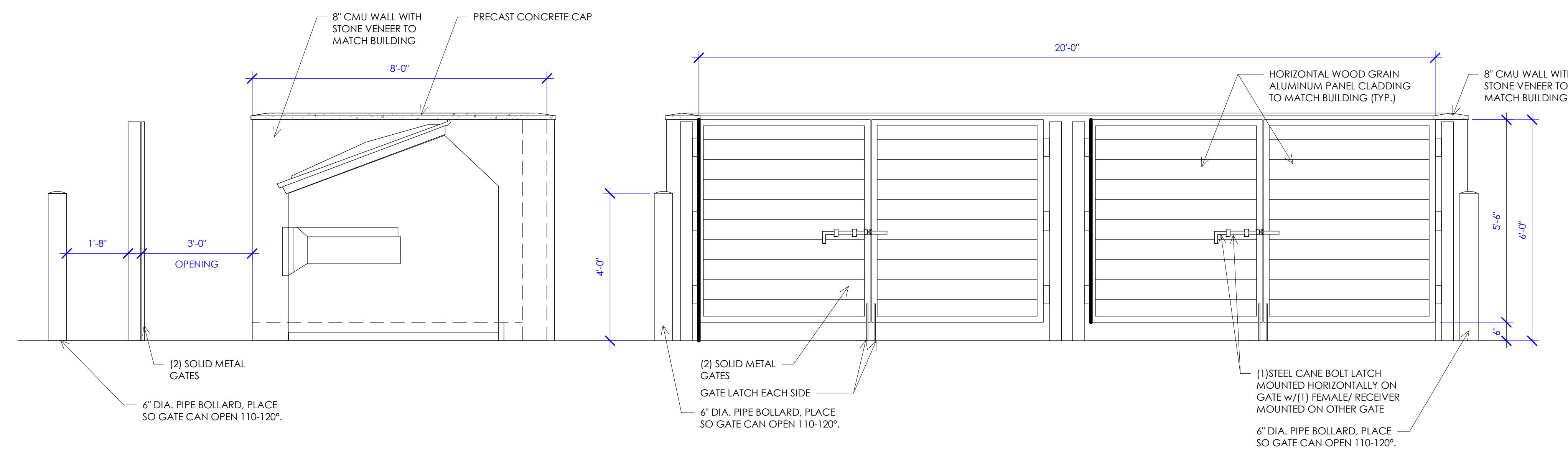
02



TRASH ENCLOSURE PLAN

SCALE: 1/2" = 1'-0"

3



SIDE ELEV.

FRONT ELEV.

TRASH ENCLOSURE ELEVATIONS

SCALE: 1/2" = 1'-0"

SHEET NOTES

1. OUTDOOR SEATING & DINING AREAS SHALL MEET ADA COMPLIANCE AS REQUIRED BY LOCAL JURISDICTION. PROVIDE EXP2-1127 DINING TABLE FOR ADA SEATING WHERE REQUIRED.

GENERAL NOTES

- A. OWNER/ARCHITECT TO COORDINATE GARBAGE & RECYCLING ENCLOSURE WITH SELECTED DUMPSTERS.

MARK	Revision Schedule	
	DESCRIPTION	Revision Date

LEGEND

AE2023.297

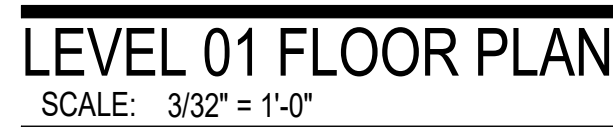
ENLARGED
SITE DETAILS -
PATIO & MISC

DATE: APRIL 4, 2024

SHEET #:

A0.11

COPYRIGHT ©
AE URBIA, LLC.



COPYRIGHT ©
AE URBIA, LLC.